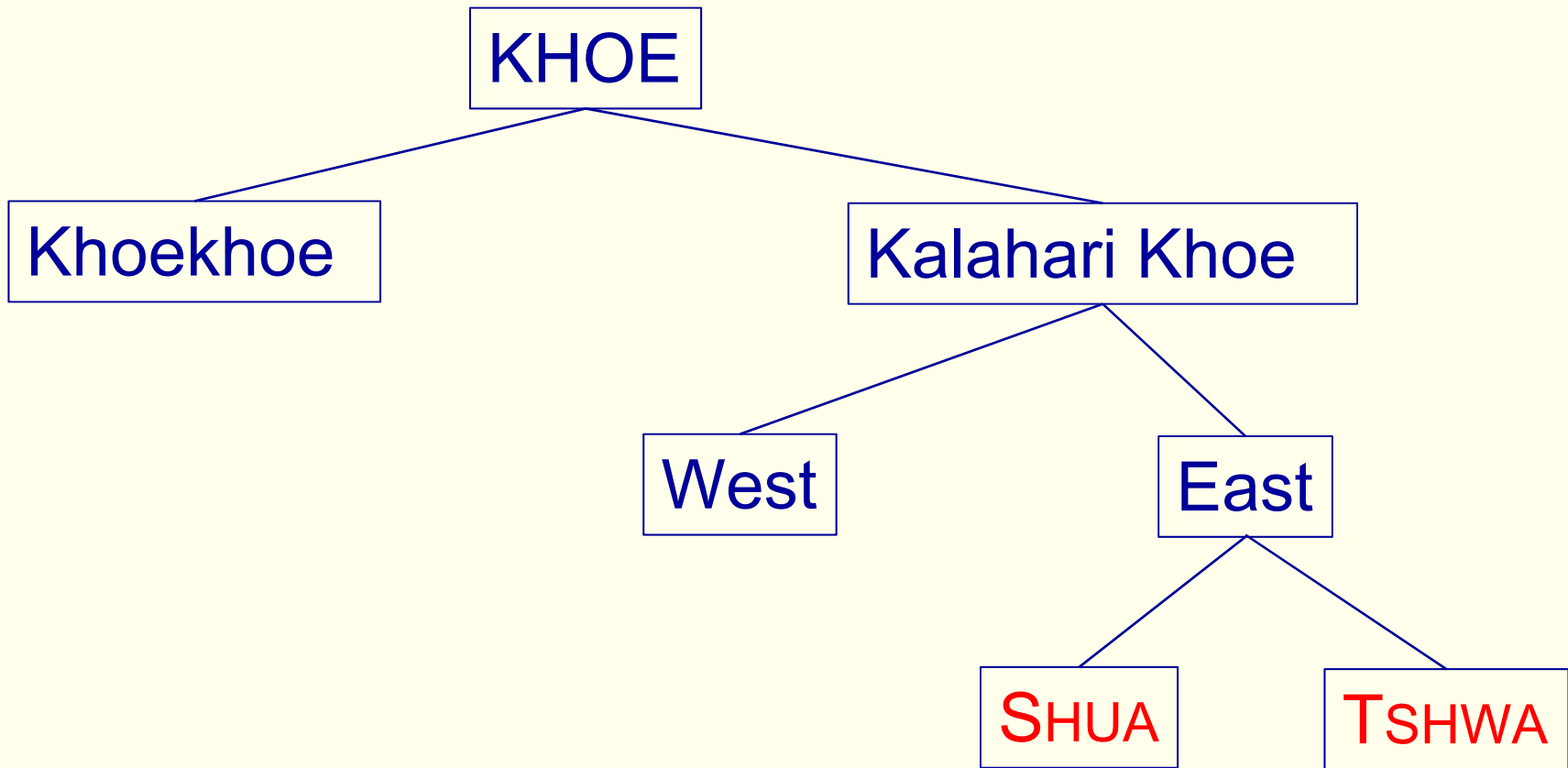
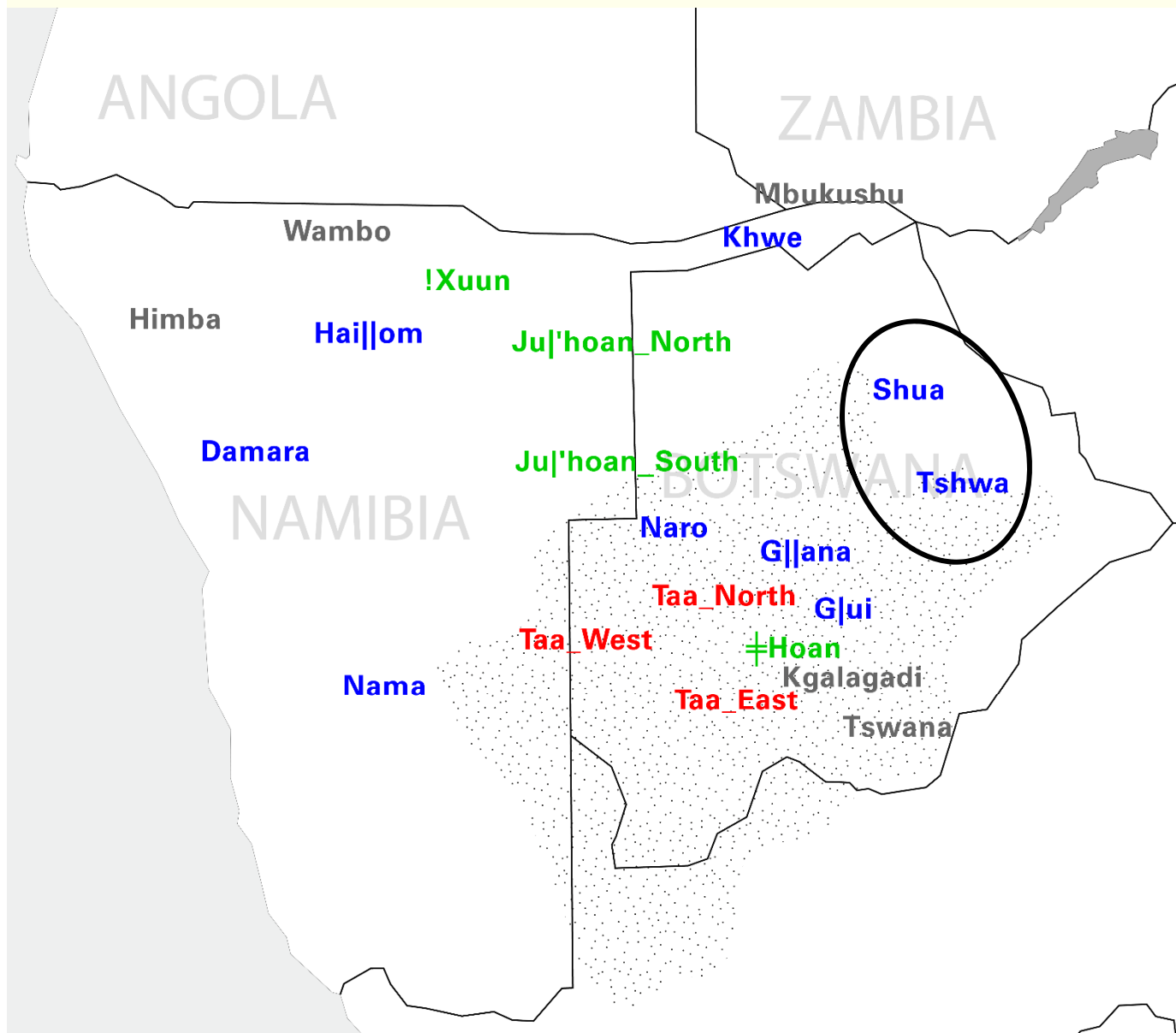


Eastern Botswana: SHUA & TSHWA





SHUA =
 “Shua”
 “Danisi”

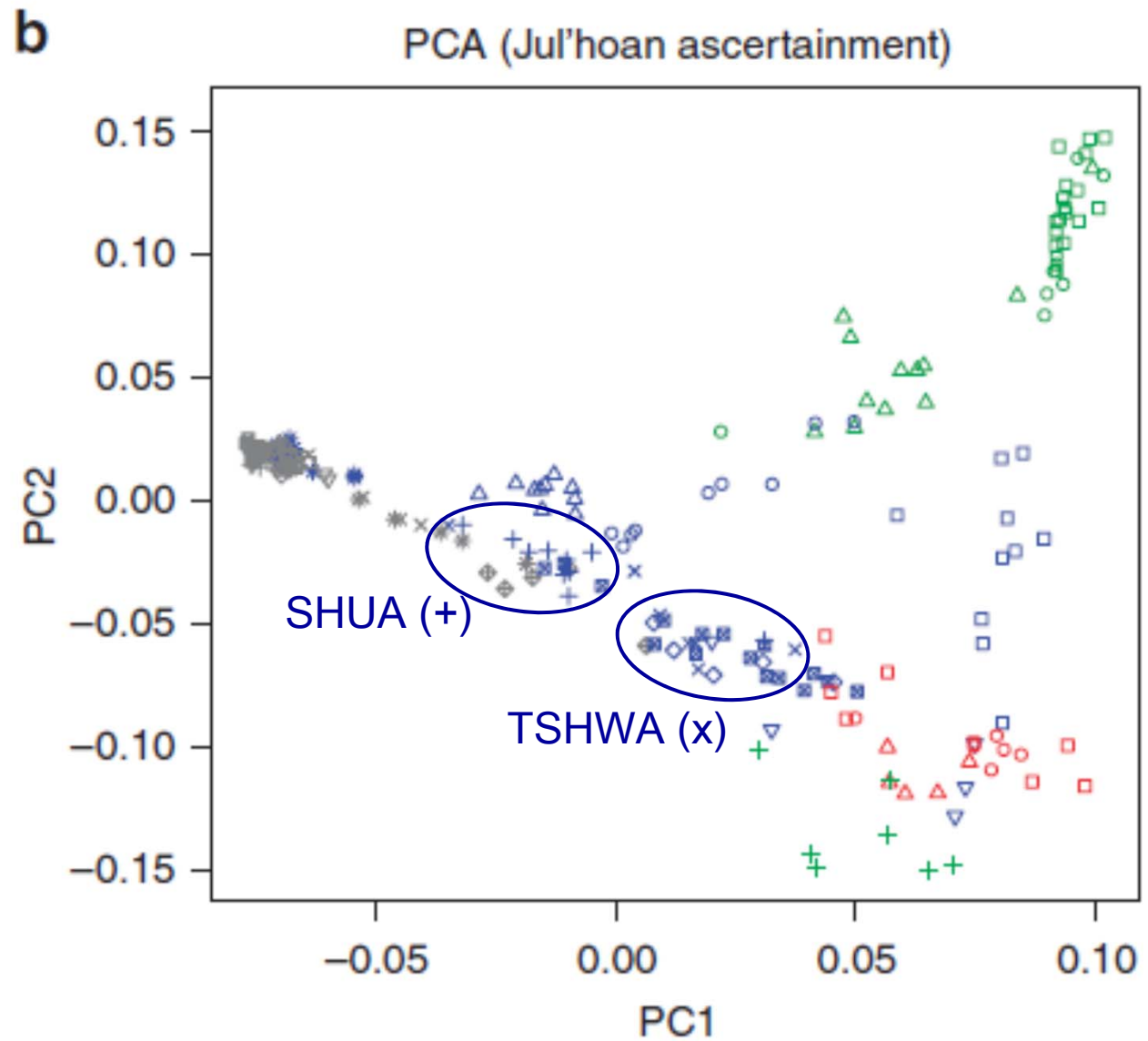
TSHWA =
 “Tshwa”
 “Kua”
 “Set|ibe”

(TcireTcire)

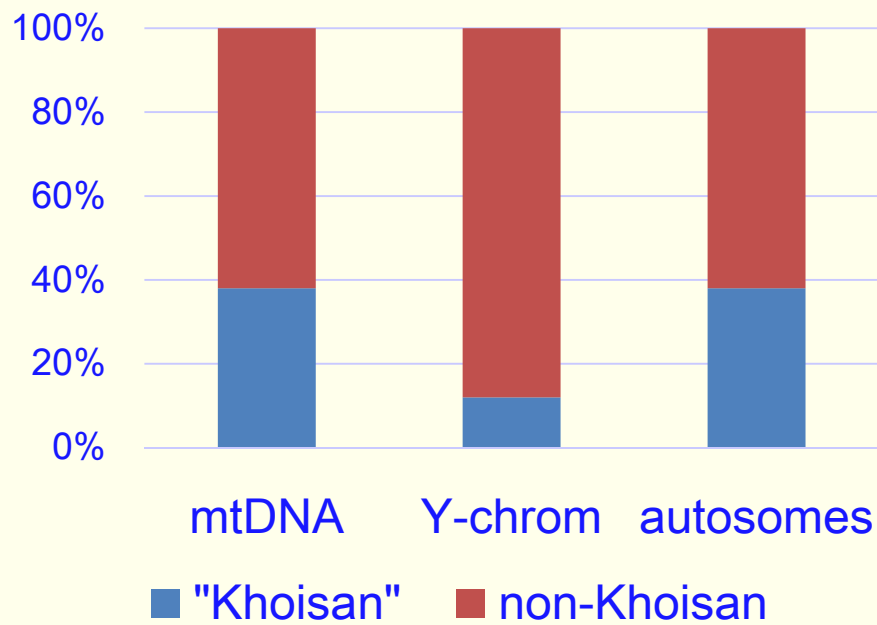
SHUA and TSHWA

- are linguistically closely related
- but have different genetic histories

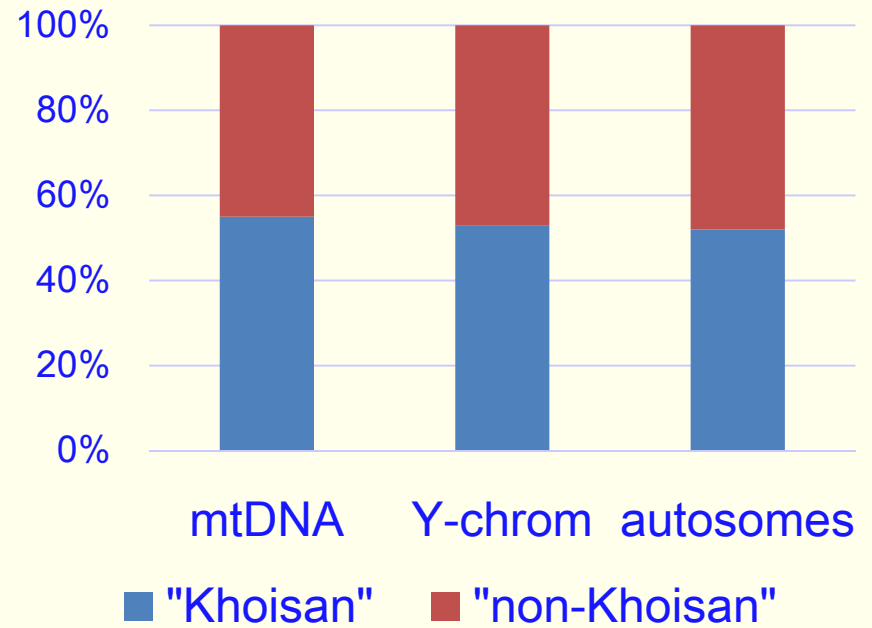
KX'A
TUU
KHOE
"BANTU"



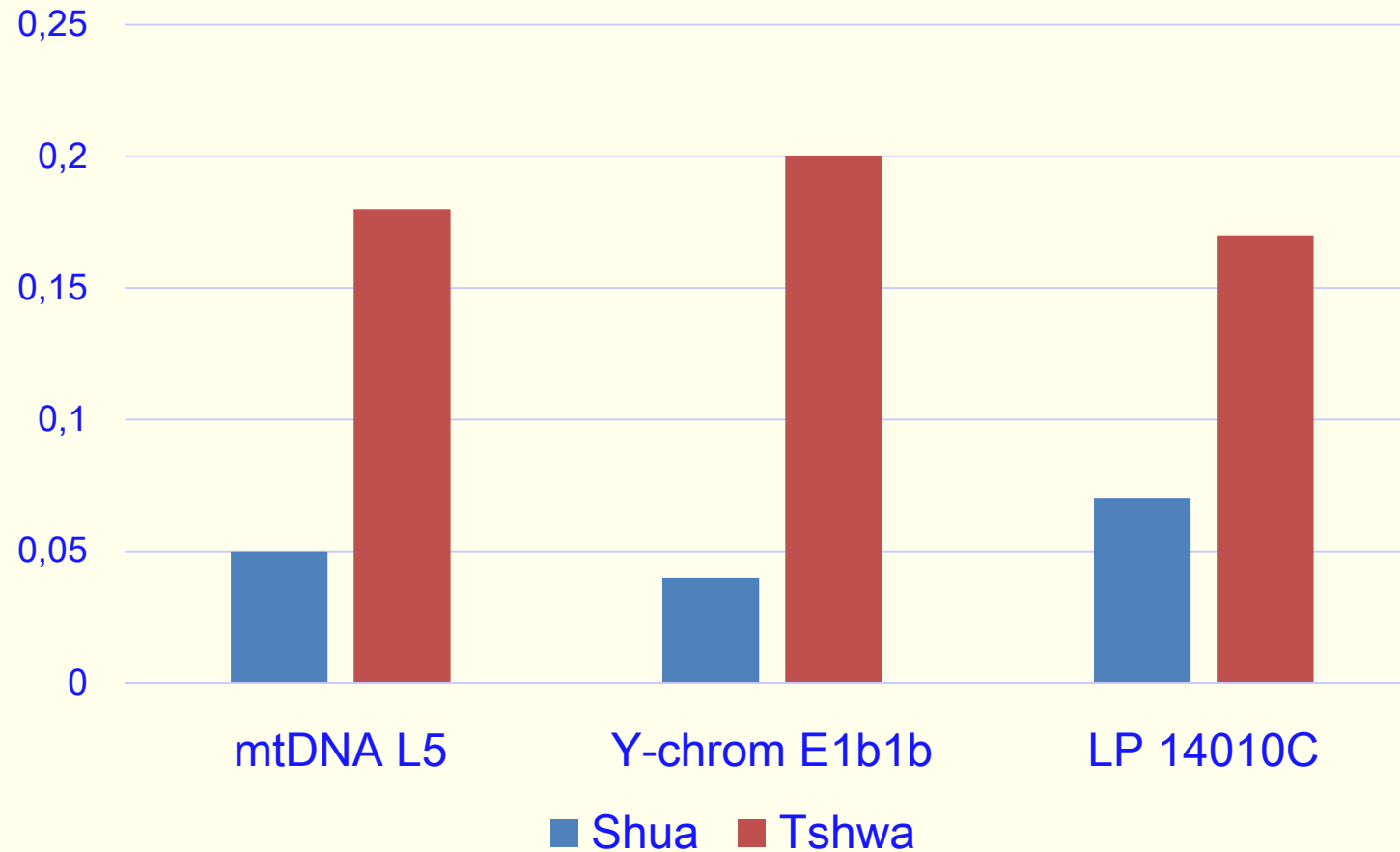
SHUA



TSHWA

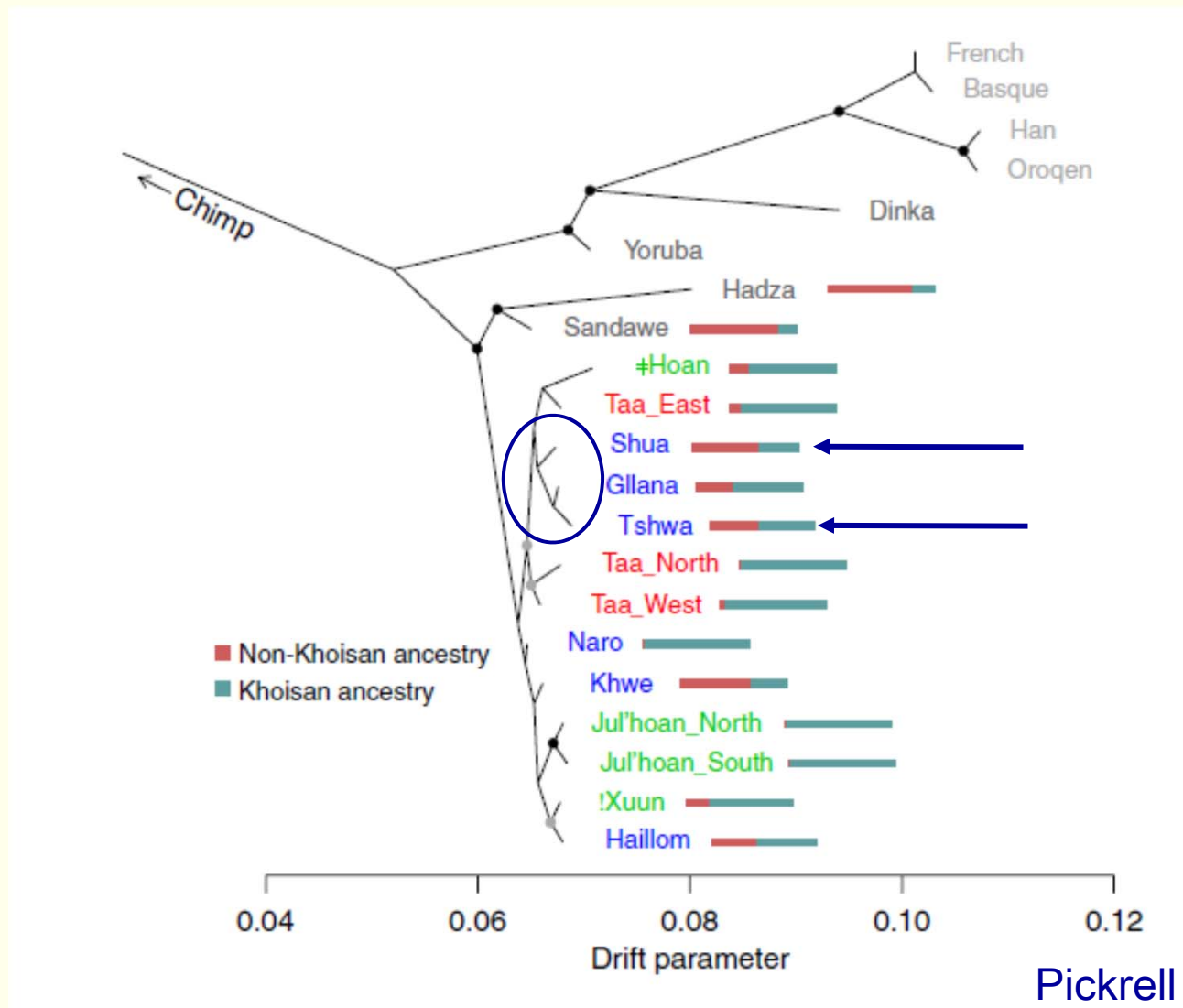


East African link is stronger for TSHWA than SHUA



Barbieri et al. 2014, in prep.; Macholdt et al. 2014

Khoisan ancestry of SHUA and TSHWA is related



SHUA vs. TSHWA

- ~75% clearly Bantu-associated Y-chromosomes
 - language shift of Bantu to Khoe with female-biased gene flow
 - admixture took place roughly at same time (~500-600 years BP)
 - admixture with same autochthonous population
- only ~20% clearly Bantu-associated Y-chromosomes
 - hybrid population (Khoisan, Bantu, East African) that speaks Khoe language

SHUA vs. TSHWA

- ~75% clearly Bantu-associated Y-chromosomes
 - language shift of Bantu to Khoe with female-biased gene flow
 - admixture took place roughly at same time (~500-600 years BP)
 - admixture with same autochthonous population
- only ~20% clearly Bantu-associated Y-chromosomes
 - hybrid population (Khoisan, Bantu, East African) that speaks Khoe language